

# 3D REPO

Graphics Card Settings

Version 1.0

# Welcome

In this guide you will learn how to assign a default graphics card in Windows as well as troubleshoot any problems along the way. If your PC has a dedicated graphics card, it is highly advised to use it for the heavy lifting when it comes to graphical tasks and viewing large models in 3D Repo.

For best optimal experience please use one of the following 64-bit Web browsers:

 [www.google.com/chrome/](http://www.google.com/chrome/)

 [www.mozilla.org/en-US/firefox/new/](http://www.mozilla.org/en-US/firefox/new/)

## Step 1

Open the [NVIDIA Control Panel](#). You can do this by right-clicking on the desktop space.

## Step 2

Select [Manage 3D Settings](#) under 3D Settings and open [program settings](#).

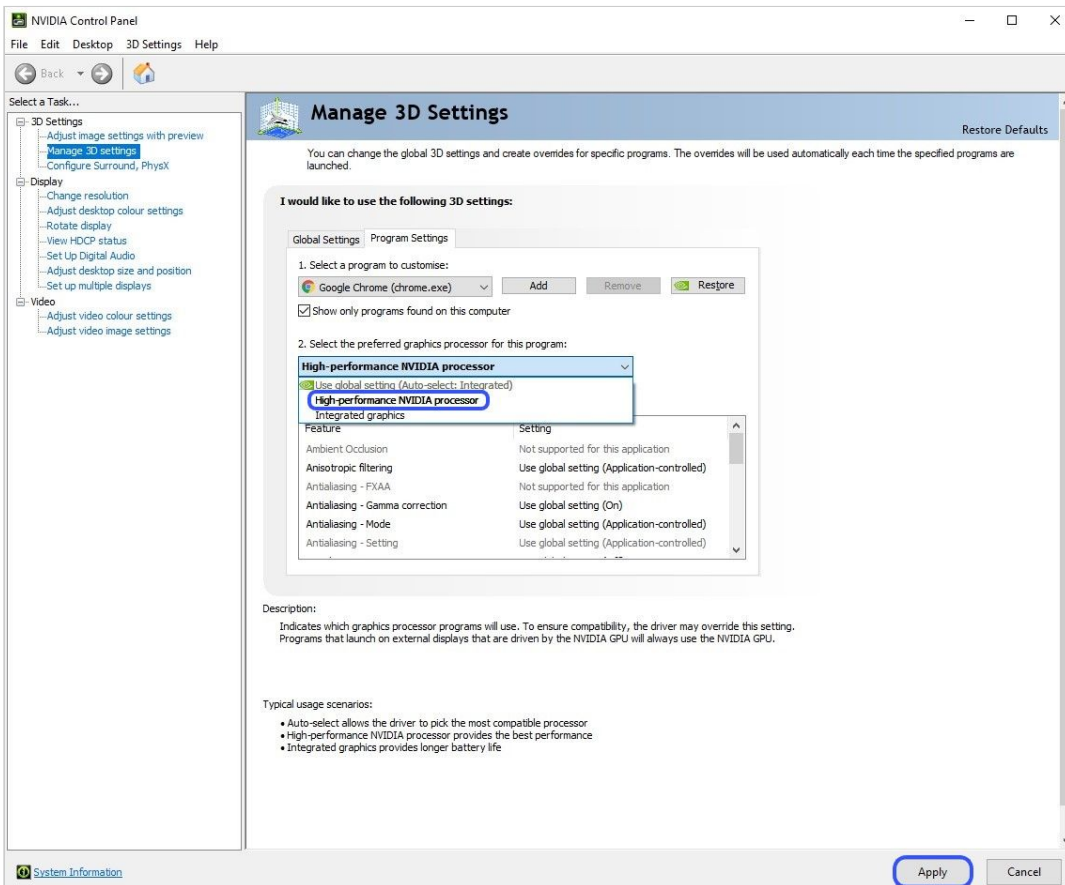
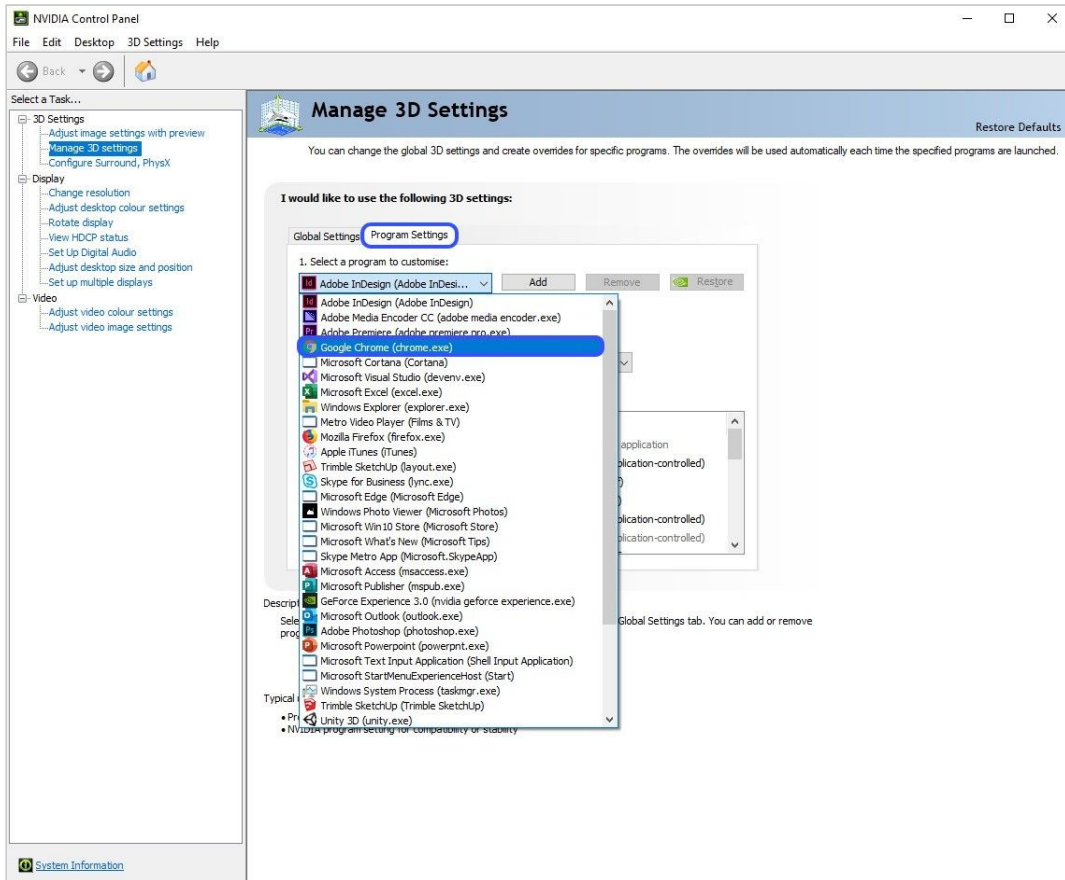
## Step 3

In the drop-down list select a program to customise. In this case it will be your [web browser](#) (ie. Chrome, Firefox or IE).

## Step 4

Select the ['preferred graphics processor'](#) in the drop down list. In order to use the dedicated graphics card, select [High-performance Nvidia processor](#). Click on Apply to save your settings.



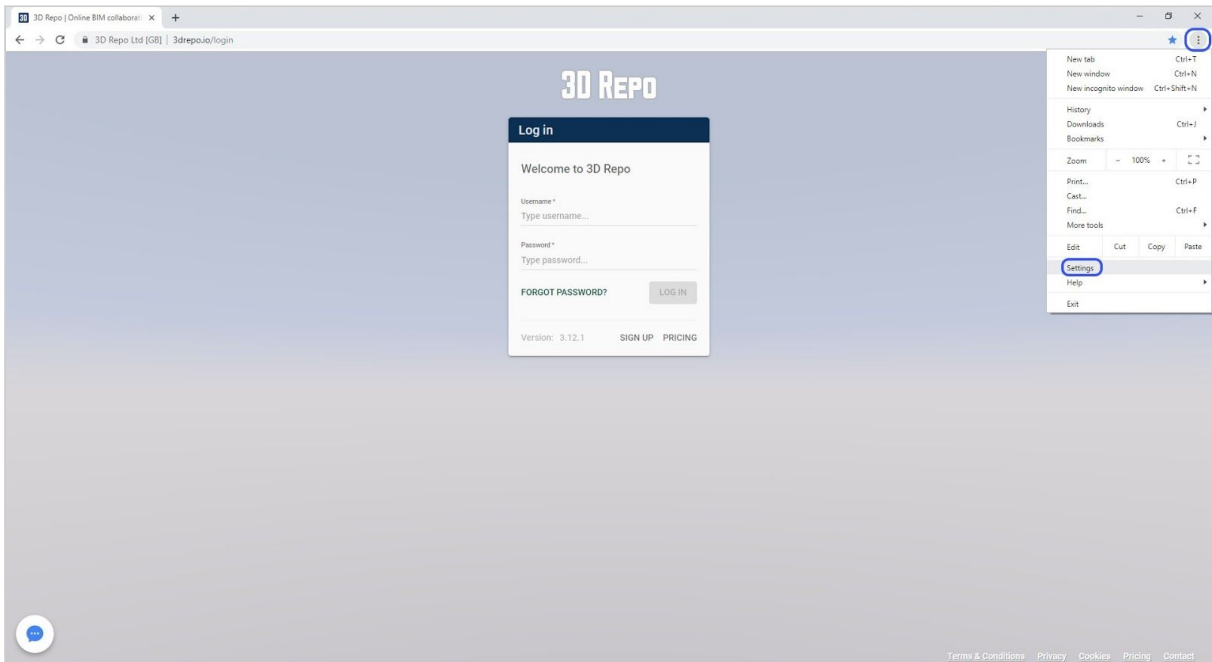


# Troubleshoot Chrome Settings

In some cases, the NVIDIA Control Panel does not resolve the program settings. Therefore, you need to take extra steps through your web browser's settings. Follow them below in order to resolve the graphical performance of your web browser.

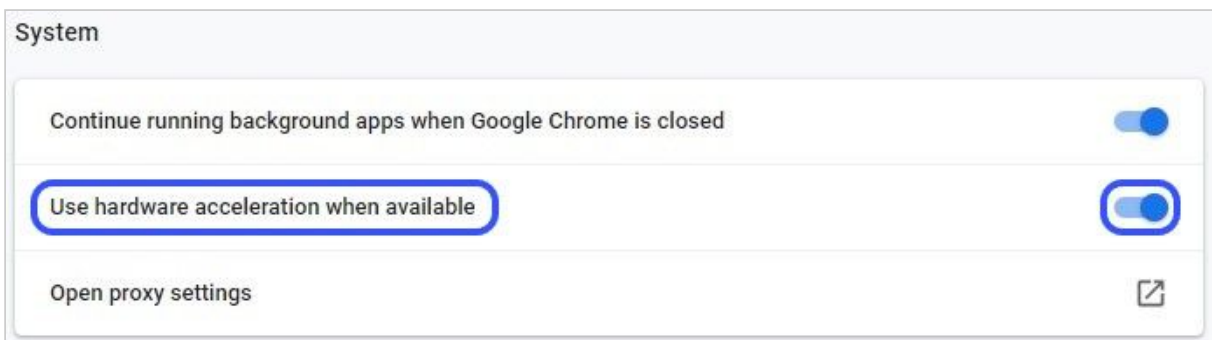
## Step 1

Open Google Chrome and navigate over to the settings menu.



## Step 2

Scroll down to the System section of the settings menu. Ensure that 'Use hardware acceleration when available' is turned on.



### Step 3

If Chrome is still not using the dedicated graphics card you will need to enable the 'Override software rendering list':

- In the address bar type in <chrome://flags> and hit enter
- Enable the 'Override software rendering list'
- Click on [Relaunch](#) button to restart Google Chrome and save your settings.

