

3D REPO

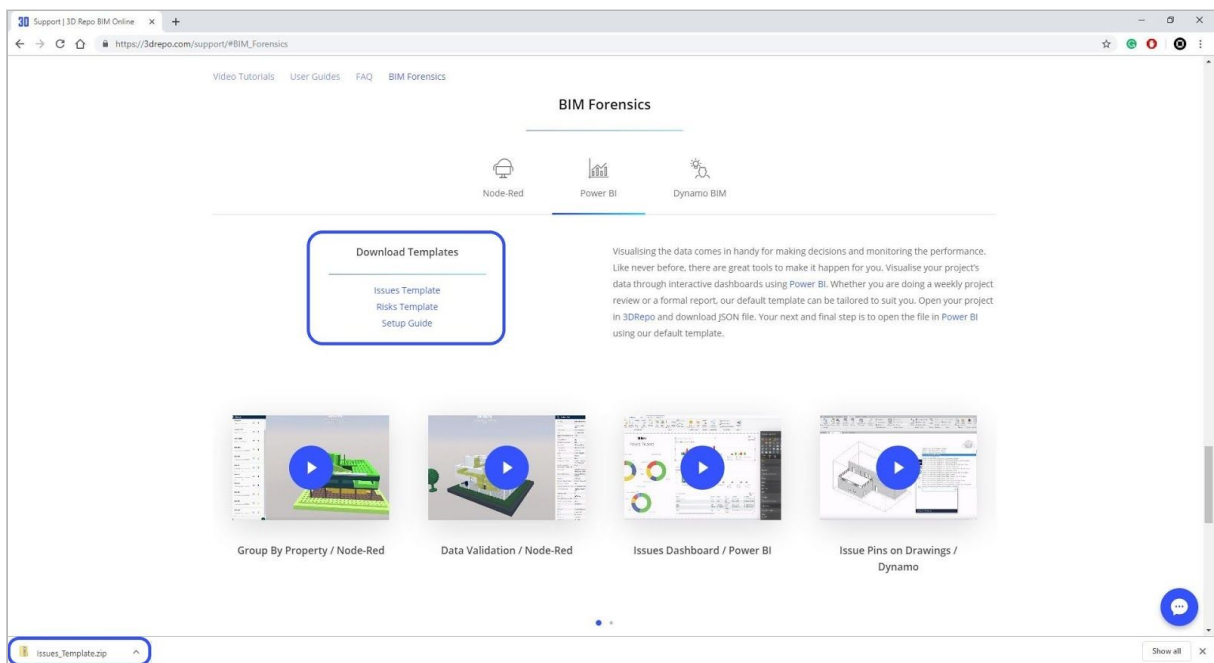
Quick Setup Guide

Power BI Template

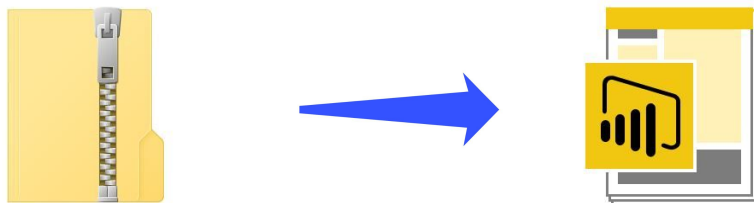
This quick guide will take you on a step by step journey in setting up your Power BI template for 3D Repo. You will establish a live link between your Power BI file and 3D Repo's database. For more information visit [BIM Forensics](https://3drepo.com) on <https://3drepo.com>
Download the Power BI application here: <https://powerbi.microsoft.com/en-us/downloads/>

Download the Template

- Open your internet browser and go to www.3drepo.com
- Head over to [BIM Forensics](#) on our support page
- Download Issues template from the Power BI Section

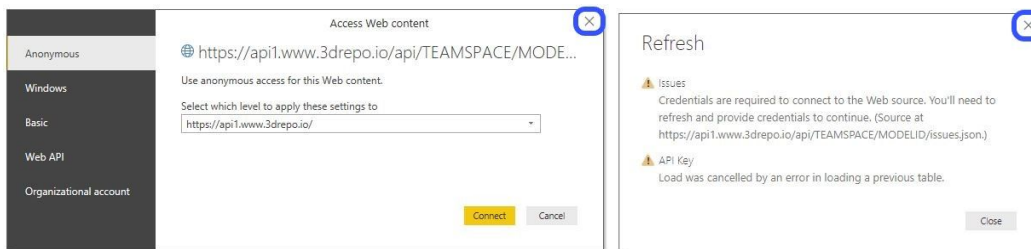


Open the Template



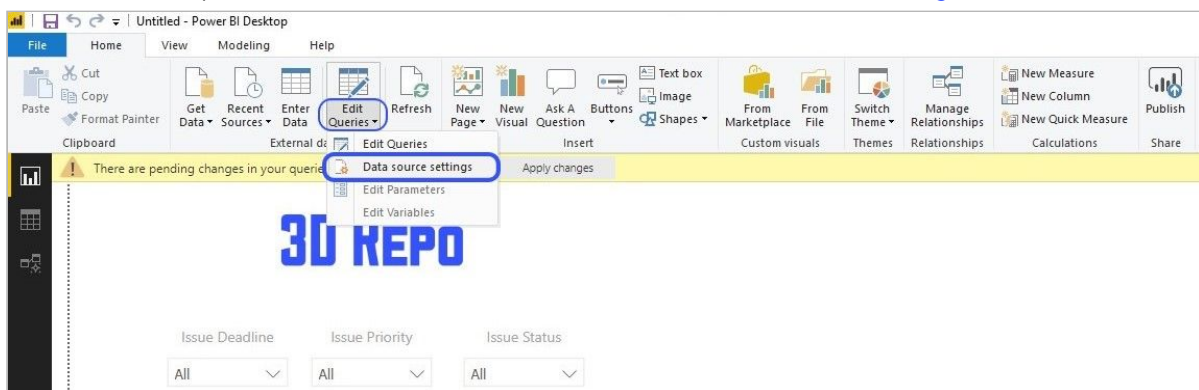
- Open the downloaded ZIP folder
- Copy paste the template file to your local drive and open the Power BI File
- Follow the next few steps in this guide to set up a live link for your project

Set up your Query

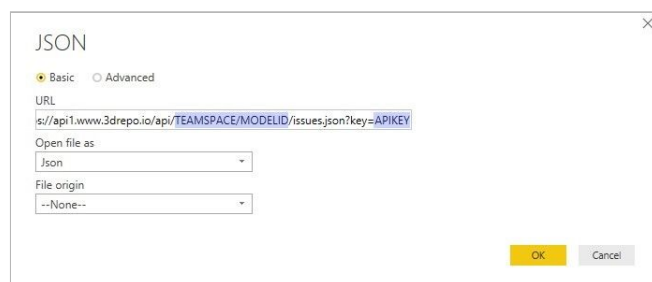
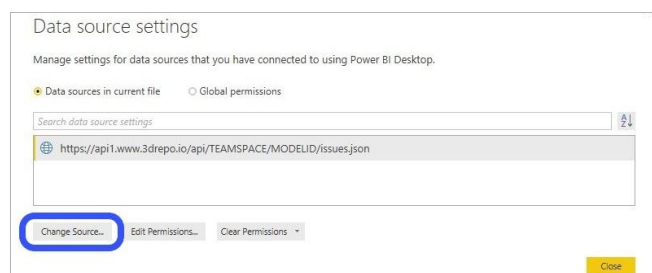


When you open the Power BI template ignore the 'Access Web Content' window and close it. In the next few steps, we will establish a live link between the 3D Repo's database and your Power BI file.

Click on the drop-down menu 'Edit Queries' and select 'Data source settings'



- In Data source settings click on [Change Source](#)
- Copy paste Teamspace, Model ID & API Key in the fields highlighted in blue
- You can generate an [API Key](#) in your profile section (for more help watch the video tutorial 'Generate API Key' on our support page)
- [Teamspace & Model ID](#) information can be copied from your web browser's address bar (you can retrieve this information by going to www.3drepo.io then open a model you want to query)

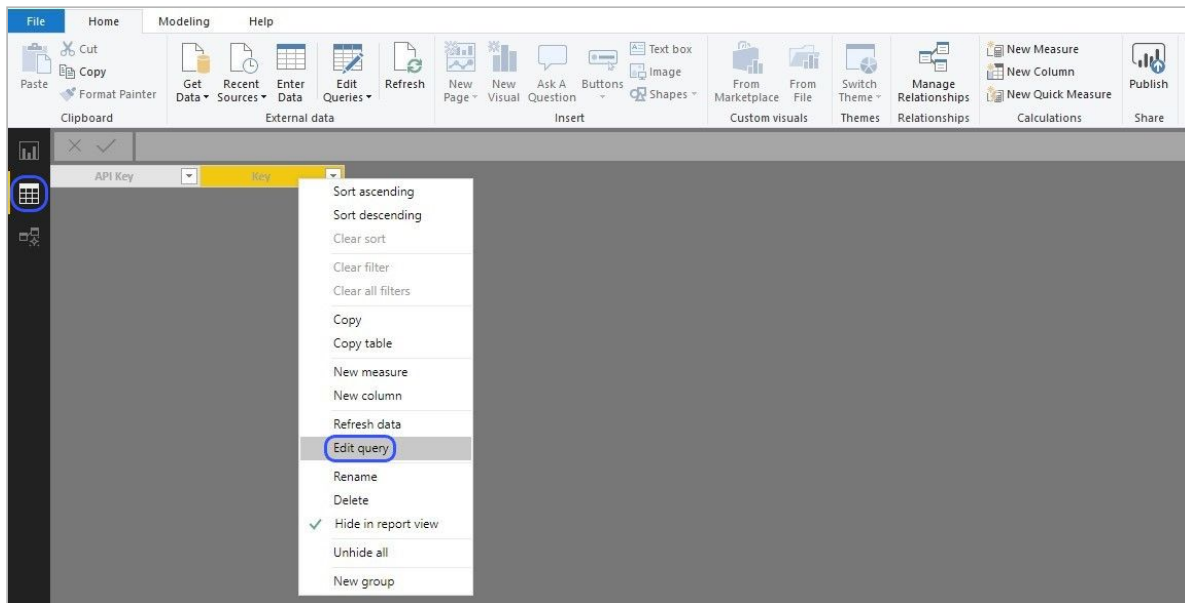


https://www.3drepo.io/viewer/demo_3DRepo/d0624777-8602-434c-8bfc-5c08e340e68a

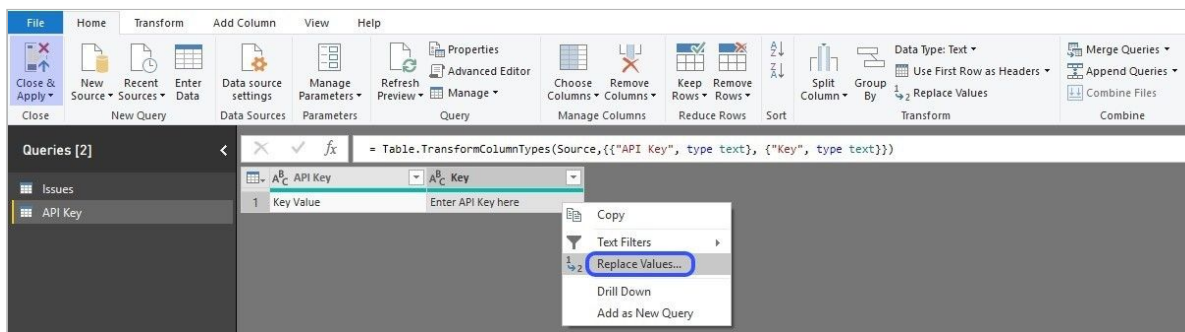
API Key for model Screenshots

Once you have set up your Web API Query, you can set up an API Key field in order to retrieve model images attached to the issues.

Click on the **Data** icon in the left toolbar. Right click on the 'Key' field and select **Edit Query**.



Right click on 'Enter API Key here' and select **Replace Values**



- Replace the value with an API Key from your account & click OK button
- Select **Close & Apply** in the top left corner of your toolbar
- When 'Access Web content' window appears, click on **Connect** to establish a live link with your model on 3D Repo
- Save your Power BI file
- Next time you open your file click on the '**Refresh**' button to retrieve the latest information

